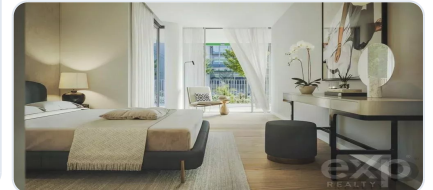


At RealKasa®, our market strategy is focused on discretion, premium presentation, and highly qualified buyer matching. Each property is positioned with a tailored narrative to maximize perceived value and market response.

## 3 bedroom apartment in Marvila

Ref: 85507293 | Lisboa > Lisboa > Marvila



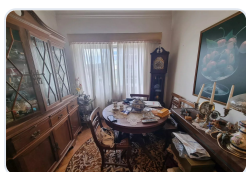
**€1.600.000**

<b>Business type</b>	Sale	<b>Property type</b>	Apartment
<b>Bedrooms</b>	3	<b>Bathrooms</b>	4
<b>Area</b>	158 m2		

## Description

Prata Riverside Village Inspired by the river, the light and the beauty of the city, Renzo Piano had his vision for the next chapter in Lisbon's life: Prata Riverside Village. An award-winning neighborhood, a unique community, which every day takes shape and becomes one of the ex-libris of our capital. A place where art, design and pure inspiration invite you to a new way of living Lisbon, which begins every morning right inside your home. Lisbon is light. Marvila is creative. Prata Riverside Village is new life. And its new building - the SOUTH Building - is where all this comes together and takes on a new expression. In the SOUTH Building, the diversity of this award-winning project takes on a new dimension. It is the first building in Prata with apartments ranging from T0 to T4, with a total of 103 apartments with a wide variety of layouts, starting at 49 m<sup>2</sup>. Each with the design and finishes that have made Prata a world reference and one of the most successful projects in Portugal. With its name, SOUTH, Prata also pays homage to the artistic and creative community of Marvila and Beato, home to established and emerging names in the Portuguese cultural scene. Innovators and dreamers, from the visual arts to music, of all ages, origins and backgrounds. SOUTH is Architecture. In this case, the inspired work of Renzo Piano. The visionary and renowned Italian who dreamed up a new way of living in Lisbon. Inspired by Lisbon's relationship with the Tagus, the sea and the world, but also by Lisbon's relationship with itself, in its old neighborhoods and towns. An inspiration that can be seen and felt, from the vision as a whole to the smallest detail of the art of building. But SOUTH is also, and perhaps above all, the Art of Living. With quality, with comfort, with strong ties, with inspiration. It's the art of enjoying life in the Parque Ribeirinho Oriente, one of the most popular in the country. It's the art of exploring new and delicious flavors in the neighborhood's restaurants and cafés. The art of being part of a diverse, modern community, of all ages and at all stages of life, from all four corners of the world, who have made their home here. It's the art of going for a run, cycling or simply meditating along the river. It's the art of finding the familiar, but also the new and surprising around every corner. And it's the art of discovering, exploring, growing and living well every day. Highlights: Architecture by Renzo Piano - the iconic Italian Pritzker Prize winner; Located next to the central square of a new riverside neighborhood with more than 100 commercial spaces and services; Open-concept Ernesto Meda kitchens, with or without an island, and complete SMEG equipment; Premium finishes that you can witness with a visit to the site; Panoramic elevators overlooking the Tagus and the building's communal garden; Class A or A+ energy efficiency; Air conditioning and home automation; Private parking with electric vehicle charger; Storage room. Living in Prata Living in Prata Riverside Village means opting for rare privileges that will make your life a new one, just a few meters from the Tagus and the new Parque Ribeirinho Oriente. A new space in the city, perfect for walking, jogging, cycling or just meditating to the sound of the river. It's going to the P'la Arte Market like visiting the neighbors. It's having new shopping and restaurant concepts just around the corner. And of course, it's having all of this just minutes from Baixa, the airport, the iconic Parque das Nações and the Beato Creative Hub.

## Related Properties



Lisboa > Lisboa > São Domingos de Benfica

### T1 apartment in São Domingos de Benfica, Lisbon

Ref: 87014700

€279.000



Lisboa > Lisboa > Lisboa

### LOJA Avenidas Muito Central - INVESTIMENTO

Ref: 85966656

€290.000

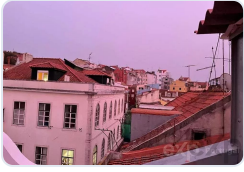


Lisboa > Lisboa > São Vicente

### **Charming 1-Bedroom Furnished Apartment in Lisboa**

Ref: 86902045

€305.000



Lisboa > Lisboa > Lisboa

### **Apartment with 2 bedrooms in downtown Lisbon of Lisbon**

Ref: 85507002

€340.000

---

## **Real Estate Solutions**

This brochure was prepared by RealKasa® for property presentation.

**Phone:** +351 914064060

**Email:** info@realkasa.pt

<https://www.test.realkasa.pt/en/listings/85507293>