

At RealKasa®, our market strategy is focused on discretion, premium presentation, and highly qualified buyer matching. Each property is positioned with a tailored narrative to maximize perceived value and market response.

# 1 bedroom apartment in Marvila

Ref: 86261284 | Lisboa > Lisboa > Marvila



**€650.000**

<b>Business type</b>	Sale	<b>Property type</b>	Apartment
<b>Bedrooms</b>	1	<b>Bathrooms</b>	-
<b>Area</b>	78,3 m2		

## Description

To live in Prata Riverside Village is to opt for rare privileges that will transform your life, just meters from the Tagus River and the new Parque Ribeirinho do Oriente.

Lisbon is light! Marvila is creative! Prata Riverside Village is new life! And its new building - the FACTORY Building - is where all this comes together and takes on a new expression.

The FACTORY brings 53 apartments, from studio to four-bedroom, with versatile layouts, abundant natural light and excellent finishes. A new architectural landmark in Lisbon, where design and comfort coexist in perfect harmony.

Each with the design and finishes that have made Prata a world reference and one of Portugal's most successful projects. In this case, the inspired design of Renzo Piano. The visionary and renowned Italian who dreamed up a new way of living in Lisbon. Inspired by Lisbon's relationship with the Tagus, the sea and the world, but also by Lisbon's relationship with itself, in its old neighborhoods and towns.

An inspiration that can be seen and felt, from the vision as a whole to the smallest detail of the art of building.

Open concept kitchens, with or without an island, and complete SMEG equipment;

Premium finishes that you can witness on a site visit;

Panoramic elevators overlooking the Tagus and the building's communal garden;

Class A or A+ energy efficiency;

Air conditioning and home automation;

Private parking with charger for electric vehicles;

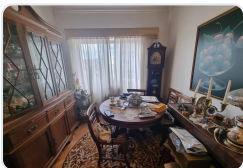
Storage room.

Prata Riverside Village is located in a new area of the city, perfect for a quiet stroll, a run, a bike ride or simply to meditate to the sound of the river.

It's going out for a unique coffee, like no other in the city. It's visiting the P'la Arte Art Market, as if you were in your neighbors' house. It's discovering exclusive stores and restaurants just around the corner.

Come and visit us! Book your visit now!

## Related Properties



Lisboa > Lisboa > São Domingos de Benfica

### **T1 apartment in São Domingos de Benfica, Lisbon**

Ref: 87014700

€279.000



Lisboa > Lisboa > Lisboa

### **LOJA Avenidas Muito Central - INVESTIMENTO**

Ref: 85966656

€290.000



Lisboa > Lisboa > São Vicente

### **Charming 1-Bedroom Furnished Apartment in Lisboa**

Ref: 86902045

€305.000



Lisboa > Lisboa > Lisboa

### **Apartment with 2 bedrooms in downtown Lisbon of Lisbon**

Ref: 85507002

€340.000

---

#### **Real Estate Solutions**

This brochure was prepared by RealKasa® for property presentation.

**Phone:** +351 914064060

**Email:** info@realkasa.pt

<https://www.test.realkasa.pt/en/listings/86261284>